

Project No. SD251063

Location 158 N LAKE DRIVE, CASTLEWOOD

LAND SURVEYOR'S CERTIFICATE

Surveyor's Certification:

I hereby certify that this plat, map, survey, or report was made by me or under my direct personal supervision and that I am a duly Registered Land Surveyor under the laws of the State of South Dakota.

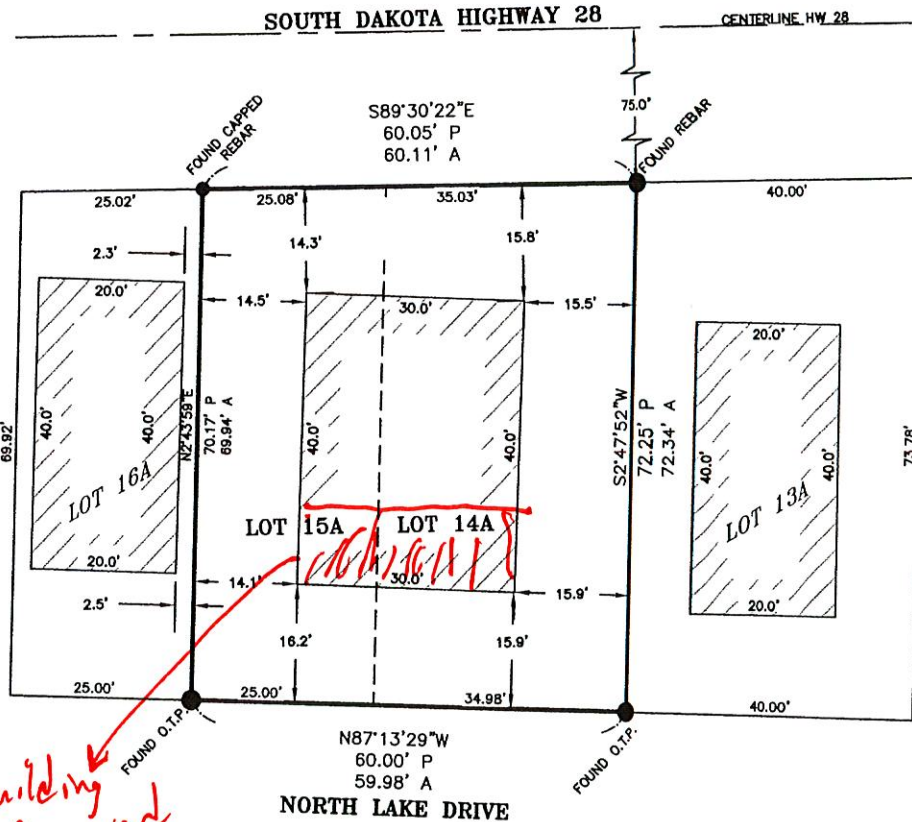
Legal Description:

LOTS 14A AND 15A, STON BRIDGE RESORT ADDITION, HAMLIN COUNTY, SOUTH DAKOTA.



NORTH

SCALE 1" = 20'



10' of Building Removed

Legend:

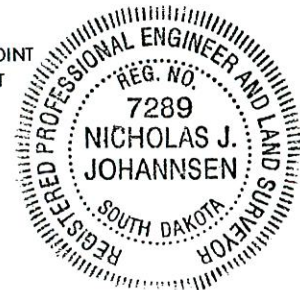
- P - PLAT DISTANCE
- A - ACTUAL DISTANCE
- R - RECORDED DISTANCE
- C - CALCULATED DISTANCE
- C.T.P. - CRIMPED TOP PIPE
- O.T.P. - OPEN TOP PIPE
- S.D.H. - STAR DRILL HOLE
- "X" - CHISELED "X" IN CONCRETE
- - FOUND SURVEY POINT
- - SET SURVEY POINT

Date: 3/17/26

[Signature]
 Nicholas J. Johannsen

Crew: CREW

Drafter: DRAFTER



**EHRHART
 GRIFFIN &
 ASSOCIATES**

ENGINEERING PLANNING LAND SURVEYING

300 N. Dakota, Ste. 114 • Sioux Falls, SD 57104 • 605 / 339-7215