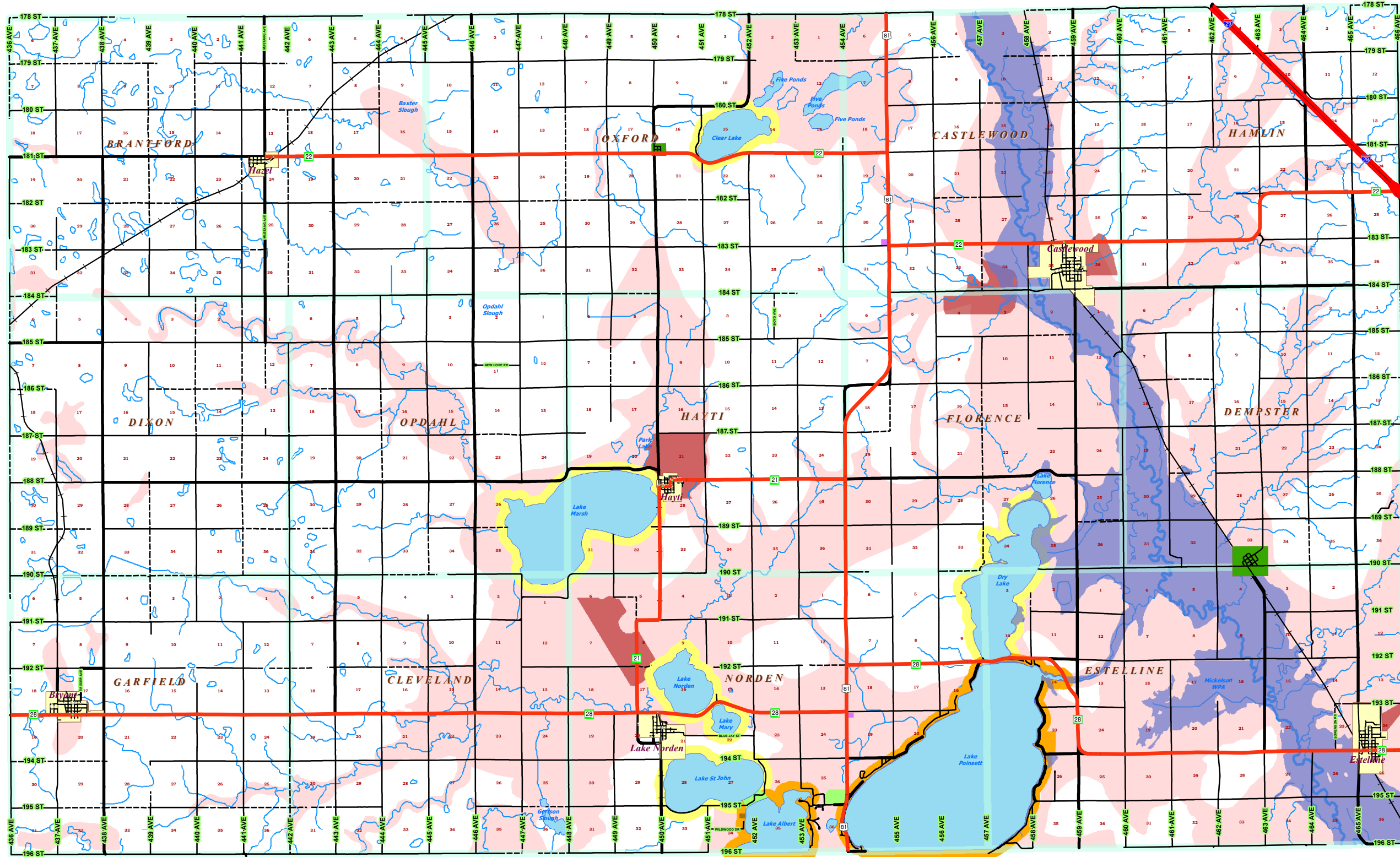


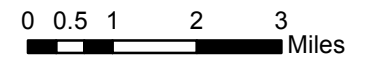
HAMLIN COUNTY OFFICIAL ZONING MAP



This is to certify that this is the Official Zoning Map referred to in Section 1.03.01 of Ordinance 2011-2. This Official Zoning Map supercedes and replaces the Official Zoning Map adopted July 6, 2004 for Hamlin County, South Dakota.

Chairperson, Hamlin County Board of Commissioners _____ Date _____

County Auditor _____ Date _____



Legend

- Stream
- Highway/Interstate
- Hard Surface
- Gravel
- Low Maintenance
- Railroad
- Incorporated Municipalities
- AP-Aquifer Protection Overlay District - Zone A
- AP-Aquifer Protection Overlay District - Zone B
- "FP" Flood Plain Overlay District
- CN - Conservation District
- A-Agricultural District
- CI - Commercial/Industrial District
- "LP1" Lake Park District
- "LP2" Lake Park District
- PR - Planned Residential District



"LP1" LAKE PARK DISTRICT:

- All land, unless otherwise zoned, within one thousand (1,000) feet of the normal high water line of Lake Pointsett, Lake Albert and within the boundaries of the Lake Pointsett Sanitary Sewer District

"LP2" LAKE PARK DISTRICT:

- All land, unless otherwise zoned, within one thousand (1,000) feet of the normal high water line of Lake Marsh, Lake Norden, Lake Mary, Lake John, Dry Lake, and Clear Lake

"AP" AQUIFER PROTECTION OVERLAY DISTRICT:

- Zone A is the zone of contribution as mapped by East Dakota Water Development District with South Dakota Geological Survey technical assistance using techniques outlined in the U.S. Environmental Protection Agency publication "Guidelines for Delineation of Wellhead Protection Areas", June, 1987.
- Zone B includes soils mapped as "Outwash" and "Sand and Gravel 0-50 ft" in the map entitled "First Occurrence of Aquifer Materials Map 11," dated June 29, 2001, created by the South Dakota Department of Environment and Natural Resources, Division of Financial and Technical Assistance, Geological Survey.

"CI" COMMERCIAL/INDUSTRIAL DISTRICT:

- Outlot 2 in the NW1/4 of Section 19-113-52 (Kones Korner)
- The South 615' of the East 373' in the SE1/4 of Section 30-115-52 (Alsville)

"CN" CONSERVATION DISTRICT:

- All lands, unless otherwise zoned, within three hundred (300) feet of an identified wetland or the Big Sioux River measured from the normal high water of the river. In addition, lands totally or partially owned by the State or Federal Governments as wildlife production or public shooting areas and all lands within one hundred (100) feet of meandered lakes shall be included in the "CN" Conservation District.

"TD" TOWN DISTRICT:

- All land described in the original Plat of the Village of Thomas.
- All land described in the original Plat of the Village of Dempster

Amendments

- 1.
- 2.
- 3.
- 4.