


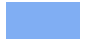
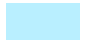


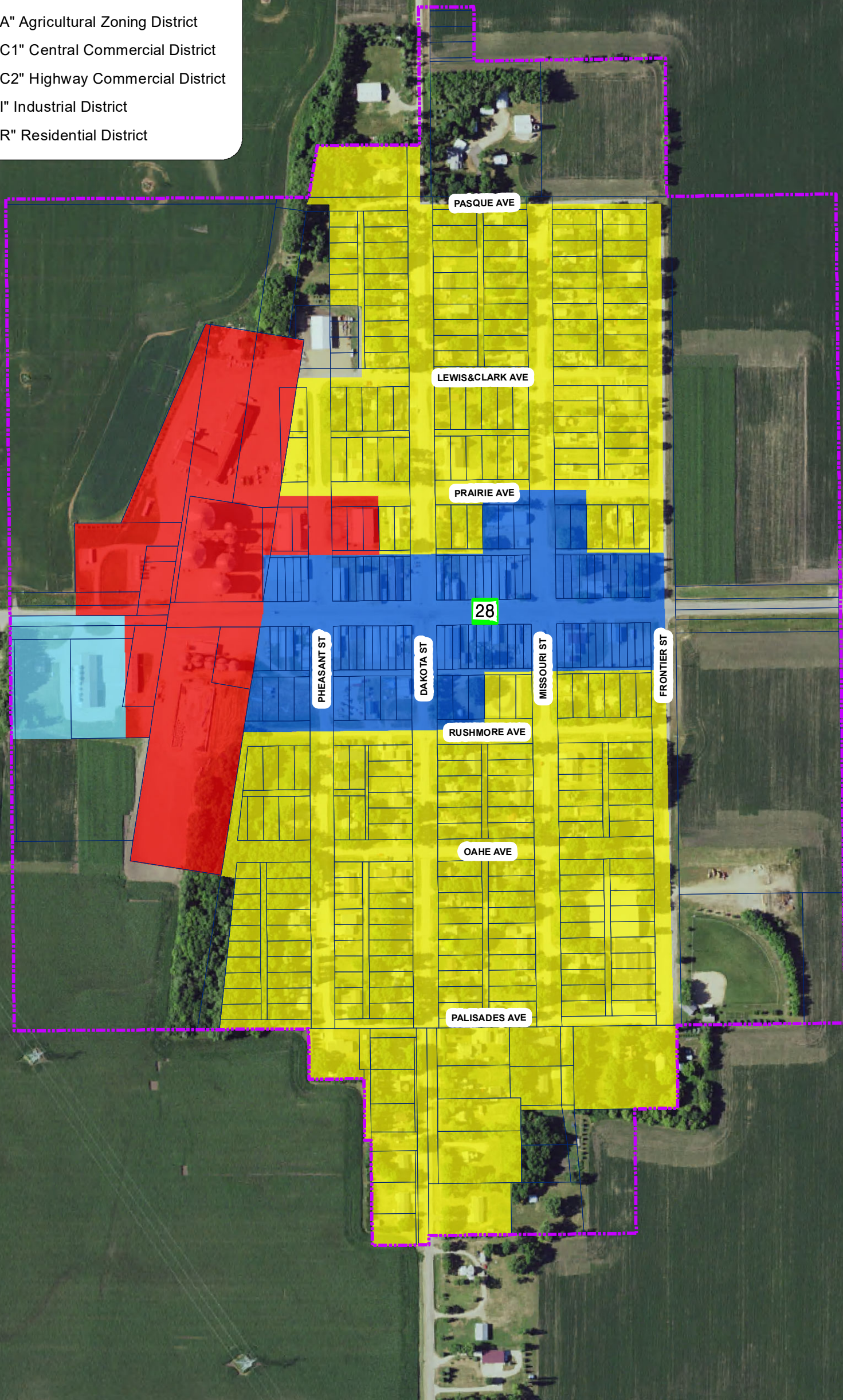


**Town of Toronto
Proposed Zoning Map
(2017)**

-  Municipal Boundary
-  Lots
-  "A" Agricultural Zoning District
-  "C1" Central Commercial District
-  "C2" Highway Commercial District
-  "I" Industrial District
-  "R" Residential District



Disclaimer
RESTRICTION OF LIABILITY
 First District makes no claims, promises or guarantees about the accuracy, completeness, or adequacy of the map data and expressly disclaims liability for errors and omissions of the data content. No warranty of any kind, implied, expressed or statutory, including but not limited to the warranties of non-infringement of third party rights, title, merchantability, and fitness for a particular purpose is given with respect to this map.



List of Amendments:

- | | | |
|----|----|----|
| 1. | 3. | 5. |
| 2. | 4. | 6. |

**Official Zoning Map
Ordinance 426**

This is to certify that this is the Official Zoning Map referred to in Chapter 1.03 of Ordinance Number 426 of the Town of Toronto, State of South Dakota, adopted December 4, 2017.

Town Board President, Town of Toronto _____ Date _____
 Toronto Finance Officer _____ Date _____